

Description

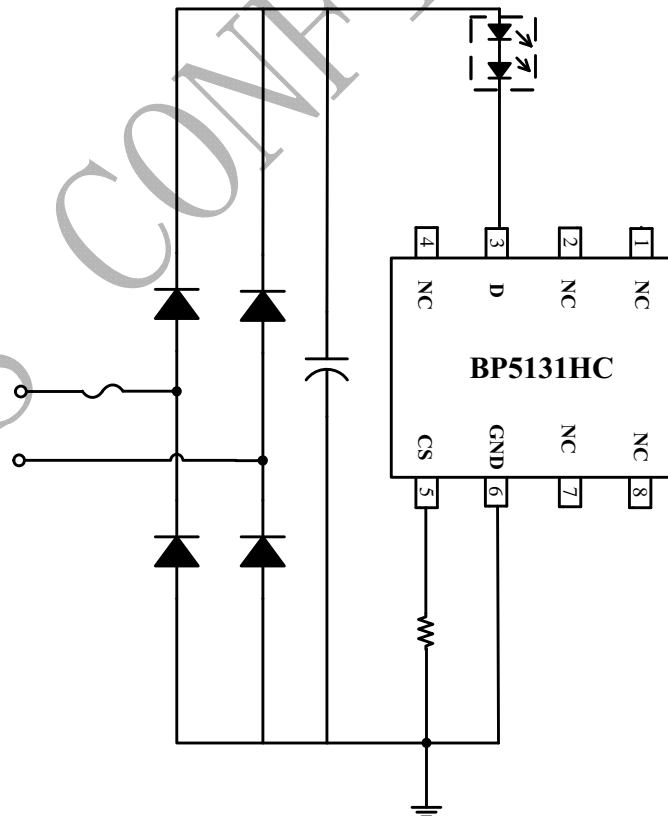
Features

- ◆ ,
- ◆
- ◆
- ◆
- ◆
- ◆
- ◆

Application

- ◆
- ◆
- ◆

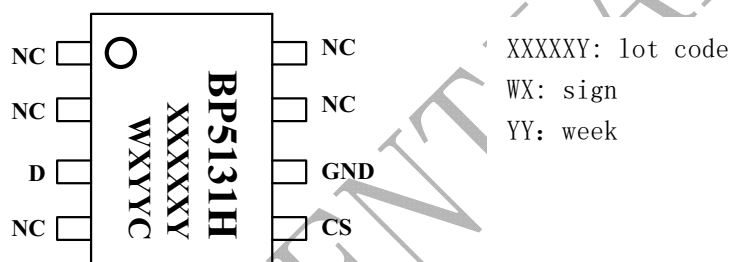
Typical Application



Order Information

Part Number	Package	Temperature	Packing Method	Mark
		℃ ℃		

Pin mapping



Pin Descriptions

Pin No.	Pin Name	Descriptions

BPS C